



**BISD CHILD NUTRITION'S**

***October***

**NEWSLETTER**



SFE is an equal opportunity provider.

# Outline

## 1. Great Reviews!

- Thank you for your feedback!

## 2. Events

- Fall in Love with Fruits & Veggies
- Roving Chef
- Pumpkin Decorating Competition
- SFETV!
- Pizza Fridays are Back!
- Catering Events

## 3. Important Updates

- NEW Nutrislice Tutorial!
- Faculty & Staff Pilot Menu
- High School Survey for New Food Service Beginning Next Year! What would you like to see?

## 4. Additional Information

- How to Pay for Meals
- Meal Prices
- Charge Policy
- Nutrislice





# Great Reviews!

## SOME FEEDBACK WE'RE HEARING

*"Wow, it looks so fresh! So happy the district is offering fresh and healthy choices to the kids."*

*"Looks delicious so happy we chagned companies!"*

*"Just wanted to tell you the menu looks AMAZING this week! I ordered the girls lunches for tomorrow and Thursday and the options great!"*

Referring to the "Fall in Love with Fruits and Veggies" Program:

*"Thank you! My boys shared how fun it was to taste samples from the chef! What a great idea to get them excited and interested in food education."*

*"According to my third grader they have the best fruit and the oranges are amazing! Loving our new food service company!"*

In response the previous post:

*"I agree!! The oranges are amazing!! Along with the assortment of different foods offered this year!!"*

Referring to the "Fall in Love with Fruits and Veggies" Program:

*"This is so awesome!! As a nutrition coach my son hears this from me all the time, but it's even more meaningful when he can hear it from someone else and see his friends enjoy it too!"*

*"Wow! That looks so fresh and nutritious!"*



SFE is an equal opportunity provider.





## New food service provider

Boerne Independent School District's new food service provider, Southwest Food Service Excellence (SFE), is hosting a Farmer's Market at each elementary school to encourage students to learn more about fruits and vegetables. The first market was at Kendall Elementary on September 22nd.

At the lunchtime events, students are able to taste delicious fruits and veggie samples. The markets will be held at each elementary campus until September 30th.



**Left to Right:**  
SFE Dietician  
Katie Pitchford,  
Kendall 2nd  
graders Vincent  
Destefano and  
Liam Nikjoo

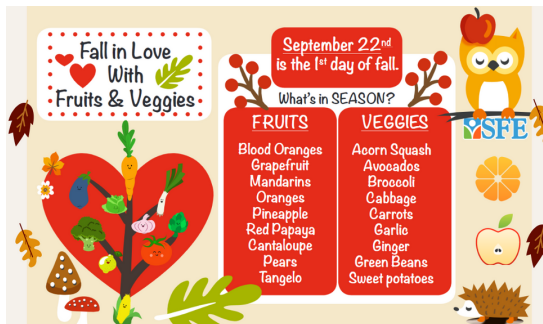


SFE is an equal opportunity provider.

# Events

## FALL IN LOVE WITH FRUITS & VEGGIES- SEP 22ND-30TH

To celebrate September 22nd, the first day of Autumn, BISD Registered Dietitian, Katie Pitchford and District Executive Chef Jose Figueroa Seary, CEC went to every Elementary school from Sep 22nd-30th, to **share information about seasonal fruits and veggies with the students.** The event was called "Fall in Love with Fruits and Veggies" and gave the students the opportunity to sample **tri-colored carrots**, **blood orange**, **cantaloupe** and **kiwi**.



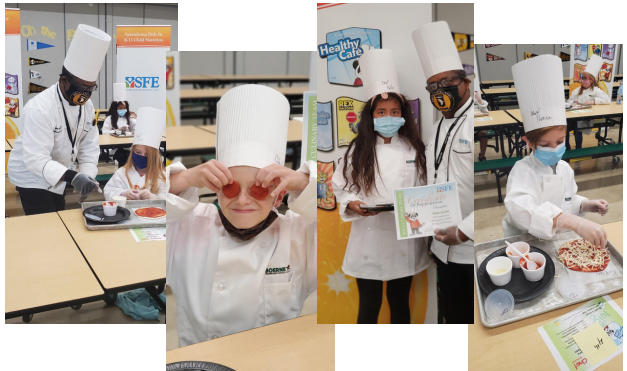
SFE is an equal opportunity provider.

# Events

## ROVING CHEF- BEGINS OCT 6TH

The Roving Chef Program consists of **healthy food demonstrations** with Chef JE Figueroa Seary, Certified District Executive Chef & nutrition education lessons provided by the BISD Registered Dietitian Katie Pitchford! Southwest Foodservice Excellence (SFE) is committed to seeing students perform at the highest level possible. Throughout the years, we have focused on serving fresh, nutritious foods, and teaching students about where their food comes from with the Roving Chef Program. **The demonstration encourages participation of each student to create his or her own meal. Each student also receives a certificate of completion, a chef hat and a recipe card** to take home to share with family and friends!

**Coming to other Elementary schools October-December!**



**Pictures from our 1st Roving Chef at Fabra Elementary**



SFE is an equal opportunity provider.

# Events

## PUMPKIN DECORATING COMPETITION

Students from each Elementary school will be decorating pumpkins on a coloring sheet, beginning Oct 13th. All decorated pumpkins will be displayed in the cafeteria.

A winner from each grade will be announced on Oct 30th and will get to choose a prize!



## SFE TV!

Chef JE Seary & BISD Dietitian Katie Pitchford will be creating videos highlighting quick, easy, and healthy recipes for BISD families. These videos will include a cooking demo along with a couple nutrition tips and facts about the dish. We'll be posing them on BISD social media, so stay tuned!



## PIZZA FRIDAYS ARE BACK!



SFE is an equal opportunity provider.





# Events



**BISD CATERING**



From small meetings to large gatherings, we're happy to cater to your needs. From quick casual to fine dining experiences, we can exceed your expectations. We are a Full-Service Catering Company and are available for On-site, as well as Off-Site events.

There is nothing that we cannot make for you!

All catering proceeds go directly to funding the BISD Child Nutrition Program and stay within the District!



For more information, please call District Executive Chef JE Figueroa Seary at 830-357-2064 or email Chef at [jose.seary@sfellc.org](mailto:jose.seary@sfellc.org)



SFE is an equal opportunity provider.

# Important Updates

## NEW nutrislice TUTORIAL!

A tutorial on how to use Nutrislice to view menus, print menus and pre-order meals has been created by the BISD Registered Dietitian, Katie Pitchford, to help answer common questions about the app and walk people through the process of using it.

To view the tutorial, please visit the BISD Child Nutrition Website:

<https://www.boerneisd.net/domain/78>

## NEW FACULTY & STAFF MENU!



A menu for Faculty & Staff will be piloted at the Academy and will be available to the the Faculty & Staff at Academy as well as the Central Office. We are sending out surveys to ask what Faculty & Staff Members would like to see on the menu and will provide them with a tasting of the different entrees. Every day we would like to provide them with a **Build Your Own Salad/Wrap** option and another option as well. Once we're done piloting the New Adult Menu at the Academy & Central Office, we plan to begin impletmenting the new menu gradually at other schools.



SFE is an equal opportunity provider.

# ***Important Updates***

## **WE NEED YOUR HELP REDESIGNING THE BHS & CHS MENUS!**

A BIG CHANGE is coming and we NEED YOUR INPUT! BHS and CHS will be REDESIGNING the entire foodservice program from the GROUND UP! We want everyone in the High School community to be involved in this process because we want you all to have ownership and a stake in which direction the Lunch and Breakfast programs will go in the future. We want a menu and a place that welcomes all and encourages all to come in daily and experience something new, inviting, and delicious on a daily basis.



Please scan this QR Code to take a short survey by Oct 16th. Your input and ideas will make the NEW Cafe Menus AWESOME!



This is Step #1. Following the survey, will be multiple focus groups and tasting panels of small groups that will sample all of the items from the menu from beverages to snacks to entrees and sides and all things in between.

**We're excited to begin this process with you!**



SFE is an equal opportunity provider.





# ***Additional Information***

## **HOW TO PAY FOR MEALS**

For your convenience, meal accounts may be paid with your credit card by paying online. Please visit the Boerne ISD website at [www.boerneisd.net](http://www.boerneisd.net). Click on Departments to find Child Nutrition. Click on Cafeteria Accounts in the side bar. The link to pay online is called "Lunch Money Now."

You will need your child's student ID number, Date of Birth, and the last 4-digits of their Social Security number to gain access to your child's meal account. If you experience difficulty with the website, please feel free to call the Child Nutrition Office at 830-357-2064 or 830-357-2063 and we will be happy to assist you.

## **MEAL PRICES 2020-2021**

**Breakfast:**    **Grade PK-12- \$2.30**    **Adult- \$2.75**  
**Reduced Price- \$0.30**

**Lunch:**    **Grade PK-5 - \$3.30**    **Grade 6-12 - \$3.55**  
**Adult - \$4.15**    **Reduced Price - \$0.40**



SFE is an equal opportunity provider.



# ***Additional Information***

## **CHARGE POLICY**

A grace period has been established for Parents to be notified after 1 meal has been charged or pre-paid funds are depleted. When the student meal balance has depleted, he or she will be allowed 3 meal charges before an alternate meal is served. No A La Carte items are allowed to be charged.

## **MOBILE ORDERING & MENU APP**

**nutrislice**

Students can view menus, order and rate/review recipes using the app Nutrislice or by visiting: the Nutrislice Website <https://boerne-isd.nutrislice.com/>

Now parents, students and staff can order their meals ahead to pick-up curbside or in the cafeteria. Meals can be ordered online or through the app store.

- Download the Nutrislice app from the App Store.
- Choose your district, then select from available menu options.
- Follow easy payment and pick-up directions
- You will receive an e-mailed order confirmation



SFE is an equal opportunity provider.



**Have Questions or need more detail?**

**Call the BISD Child Nutrition Staff at  
830-357-2064**

**or**

**Send us an email using our Staff  
Directory Information on the BISD  
Child Nutrition Website!**



SFE is an equal opportunity provider.