

Setting Up to Print

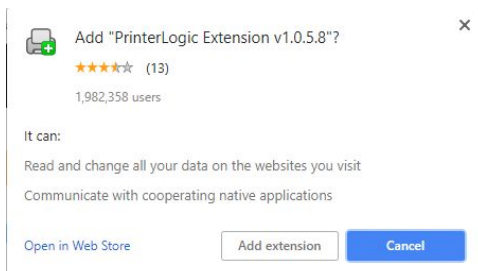
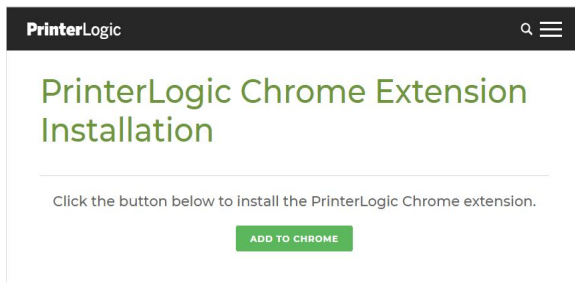
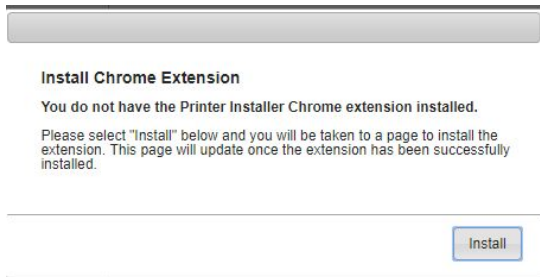
Step 1: Left click on the arrow on the bottom right-hand corner of your screen



Step 2: Click on Printer with a Plus Sign icon.



Step 3: Might need to enable or install the add-on for Chrome. If so, follow the steps bellow selecting "Install" then "Add to Chrome" and finally "Add extension".



Step 4: Select your campus.



Step 5: Select the printer you want to print to from the available printer list and click to install.

