



INFORMATION TECHNOLOGY SERVICES

2015 Network Risk Assessment Results

Below are the results of network risk assessment completed in October 2015. The results of this assessment were used to determine critical areas of need for technology obsolescence and inefficiencies in network design and stability. A comprehensive design plan has been proposed as part of the 2016 bond issue.

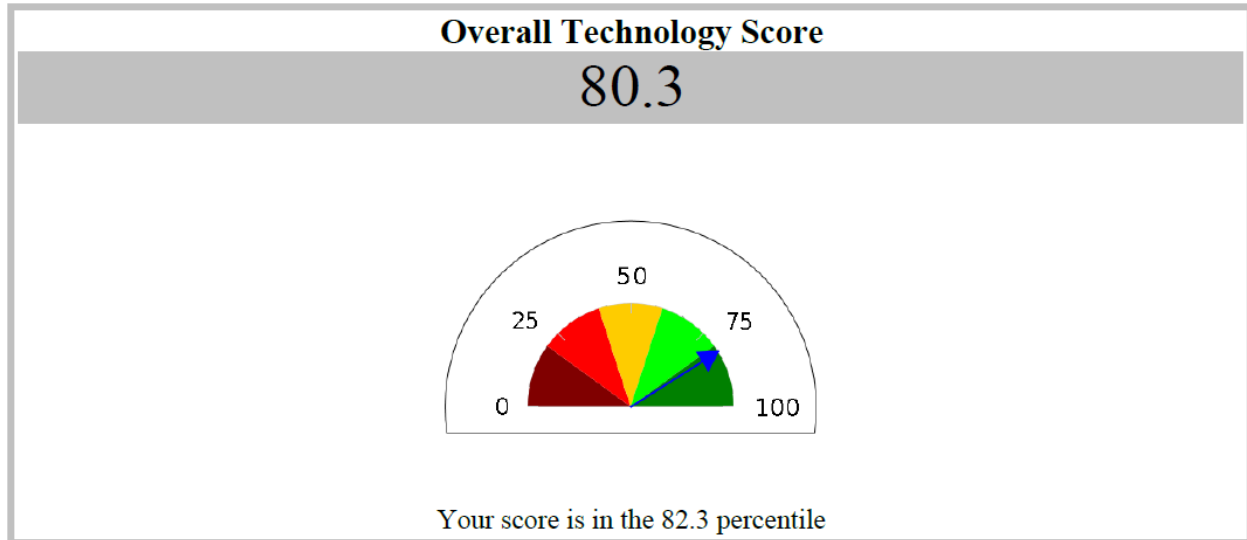


Chart Summary

The graph above is our overall score. As you can see from this score, Boerne ISD technology has a favorable rating overall.

| *All scores are based on a 100 point scale.*

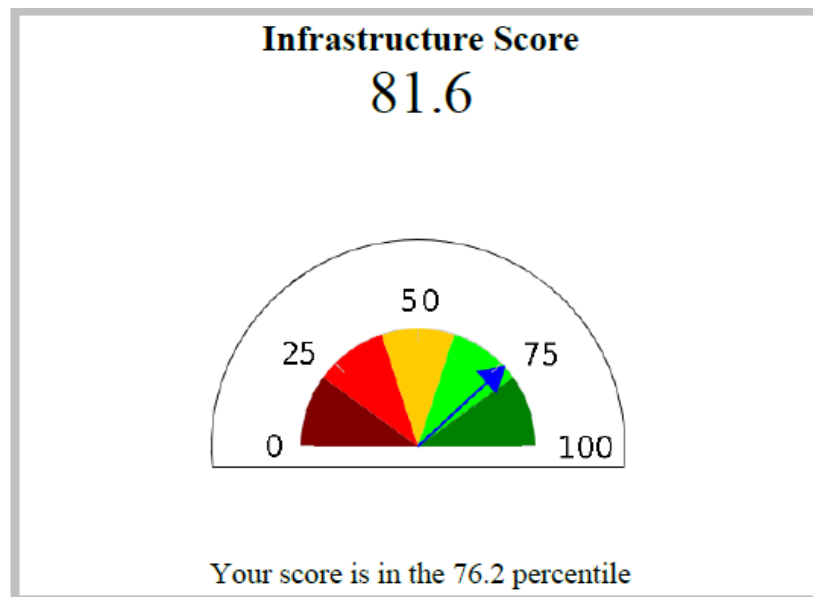


Chart Summary

The graph above details our score for our network infrastructure. This includes speed and age of routers and switches, and connectivity, speed, and reliability of the network and Internet connections.

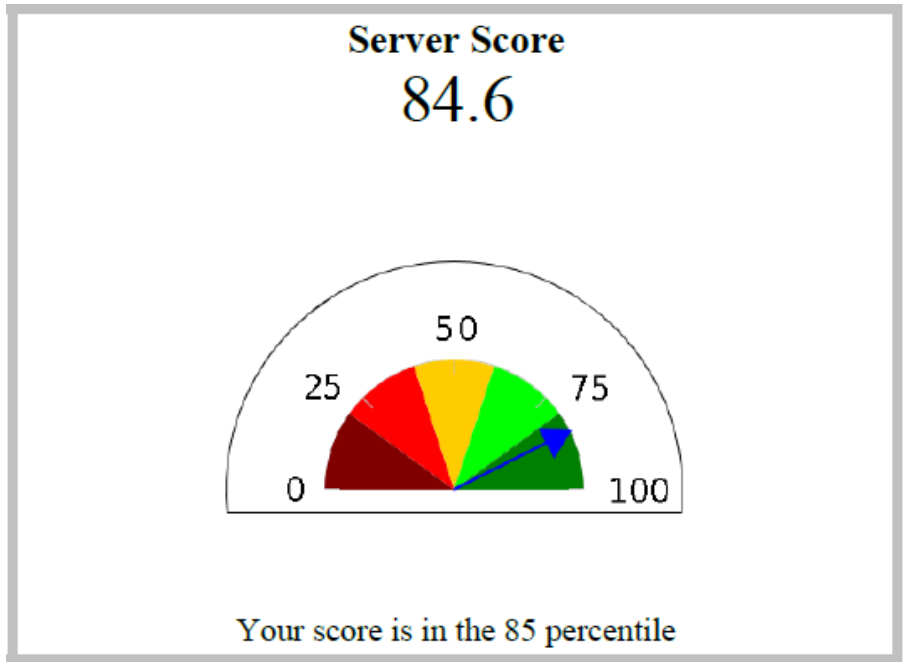


Chart Summary

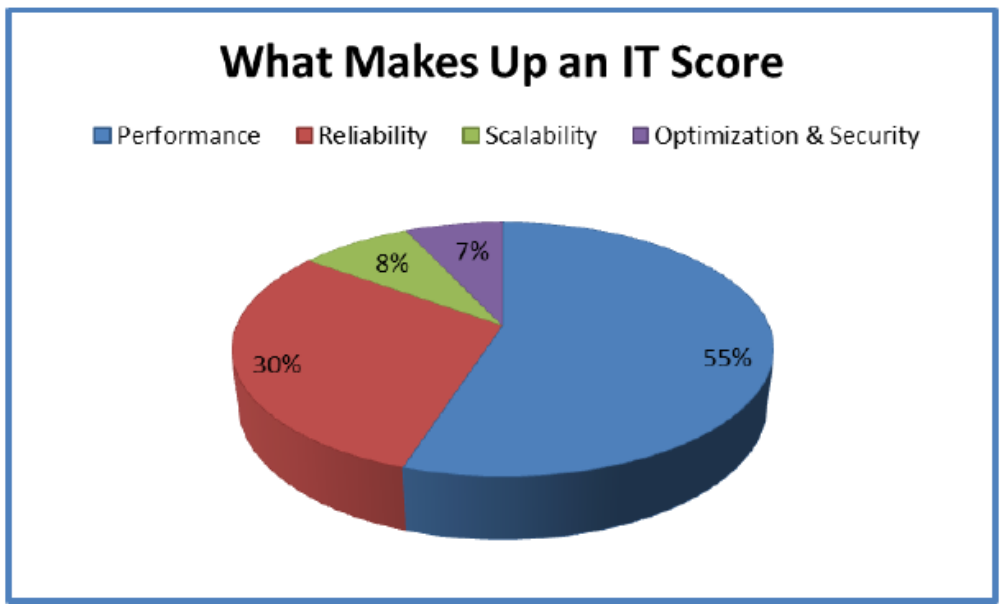
The graph above details the score for our servers. This score measures speed, age, and available resources for each server in the district.

What Makes Up an IT Score?

The Technology Score is based on thousands of data points from each technology and focus area. The follow chart outlines the general weighted factors that comprise the scores above.

Within each technology focus, there are additional weighted factors based on the severity or importance of various data sets. By doing this, a comprehensive analysis of the overall state of the IT environment can be made and easily compared.

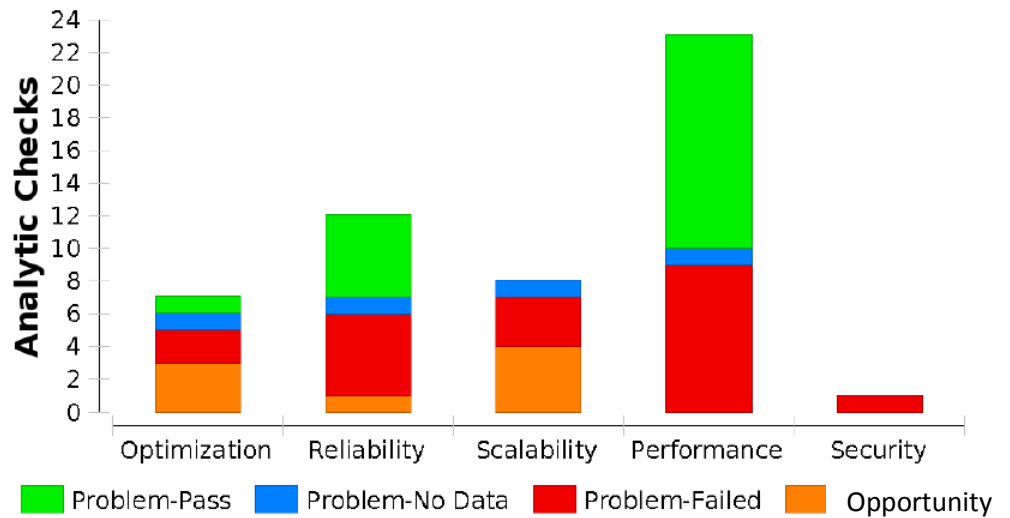
The scores above also contain the relative percentile ranking against all other assessments performed to provide a solid comparison as to how our IT ranks against others. These comparative analytics are based on thousands of assessments performed each year from all verticals and size.



Analytics Check Summary

The follow are the results of the Core IT Analytics Checks. Below are the total number of failed checks broken out by technology area.

Technology	# Failed
Network:	12
Server:	7
UC:	1
Total:	20



Summary

As you can see from the charts above, there are areas of improvement, specifically with reliability, scalability, and performance of our network and server infrastructure.

Some things that would cause a failed check might be:

- Device age
- Slow connectivity and/or link detection
- Poor design and/or configuration
- Excessive utilization of available resources
- Excessive latency

Conclusion

In conclusion, you can see that while Boerne ISD does receive a favorable overall score, there are still many areas that we can improve on. There are several areas of concern, specifically with reliability and performance. Having a reliable and efficient network is the foundation of a solid IT infrastructure, and without it all other connected devices (iPads, laptops, wireless, desktops, etc.) can underperform as well.