



A Vision for BISD Learners

Boerne Independent School District

2015 Visioning Committee

In charting the course for the future of Boerne ISD, the most important consideration is what is best for our students. How best can we equip a BISD learner with the knowledge, skills and attributes necessary to achieve success?

We would like to thank the following parents, teachers, administrators, students, board members and community leaders for helping develop this profile, which will guide the district's planning processes going forward.

Dale Adams
 Karen Aitken
 Emily Berset
 David Boggan
 April Brinson
 David Brown
 Bret Bunker
 John Burks
 Susan Cleveland
 Beth Coyle
 Emery Pechacek
 Georgia Franks

Carlin Friar
 Linda Gann
 Joe Granados
 Beto Hinojosa
 DeNette Krawczynski
 Don Layton
 Harry Lees
 Ellie Maxwell
 Lisa McLaughlin
 Jonna McRedmond
 George Monroy
 Chris Ormiston
 Tracy Pantuso

Dan Rogers
 Ryan McGovern
 Rich Sena
 Donna Sharp
 Jodi Spoor
 David Stelmazewski
 Tanya Tate
 Kevin Thompson
 Julie Turner
 Sharon vonRosenberg
 Debra Whittenberg
 Marshay Wolff
 Wendy Zamzow



PREPARING OUR STUDENTS FOR THEIR FUTURE

Boerne ISD strives to prepare all students for the world they will face following graduation.

Working together with parents, organization sponsors, business leaders, community supporters and others, our teachers and staff commit themselves to helping students achieve their full potential and chart a course for their future that draws from the cumulative experiences of their Boerne ISD education.

We believe all Boerne ISD learners should possess certain academic proficiencies and personal qualities.

A Boerne ISD Learner is ...

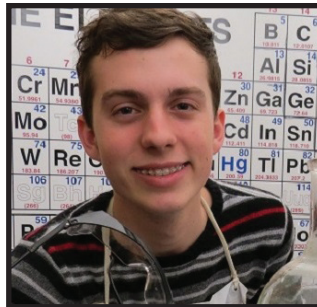
Academically prepared with

- Mastery of a content-rich curriculum
- Competence with technology
- Engagement in the fine arts
- Proficiency in research and information literacy
- A disciplined approach to goal setting and problem solving

A Boerne ISD Learner is ...

A critical thinker with an inquiring mind who

- Is creative, passionate and open to change
- Observes, listens and questions
- Is resourceful and analytical



A Boerne ISD Learner is ...

An active, effective communicator who

- Possesses self-confidence and masterful social skills
- Values collaboration and a team environment
- Respects others and values conflict resolution
- Demonstrates well-developed written and oral communication

A Boerne ISD Learner is ...

A responsible, engaged member of the community who

- Embraces civic duty and a service orientation
- Is caring, empathetic and generous
- Is ethical, respectful and self-disciplined
- Develops a global perspective



A Boerne ISD Learner is ...

Someone with a deep sense of self-awareness who

- Takes ownership for ongoing learning
- Exhibits confidence in their abilities
- Challenges themselves to achieve personal improvement
- Displays perseverance and resilience